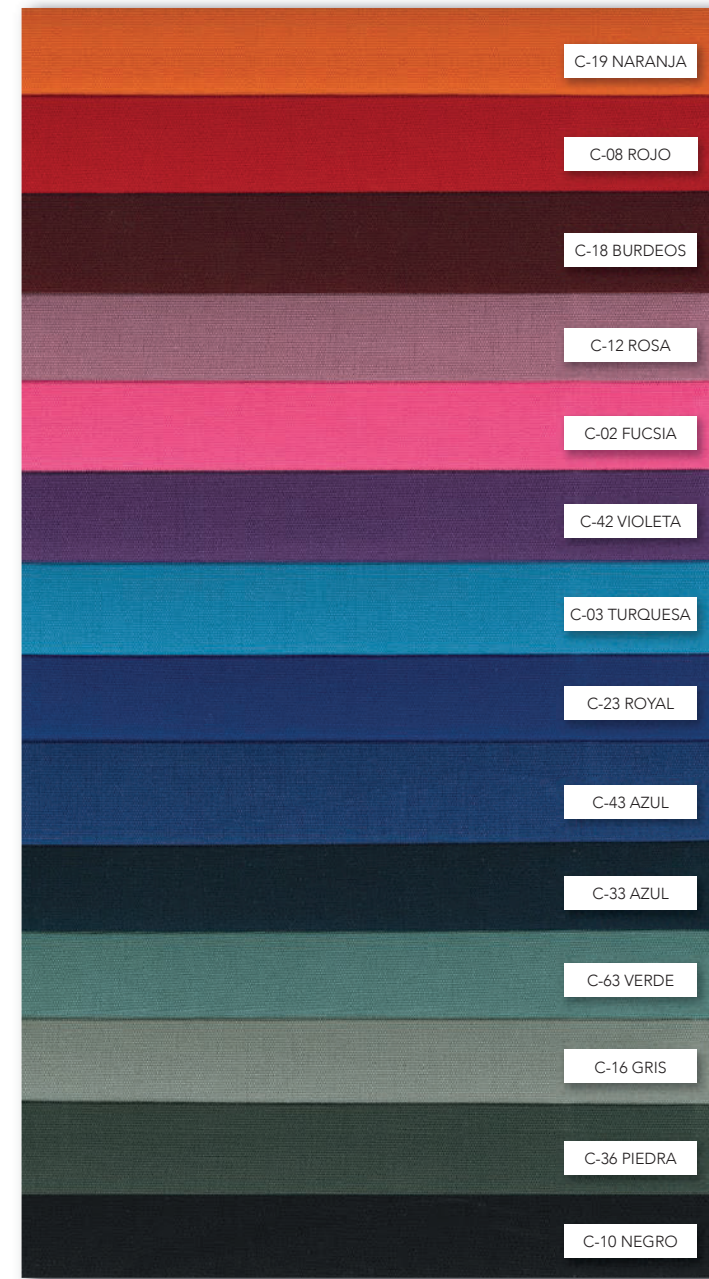


OUTDOOR FABRICS

LENA LISO

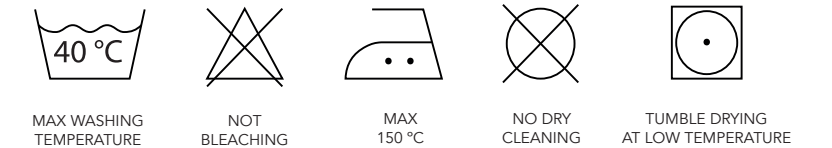


FICHA TECNICA DRALON/TECHNICAL SHEET

ARTICULO/ARTICLE	LENA LISO	CALADA/PLAIN
COMPOSICION/COMPOSITION	UNE-EN ISO 1833:2011	100% ACRILICO, DRALON ACRYLIC
PESO gr/m2 / WEIGHT OF FABRIC PER m2		190 gr
ANCHO / WIDTH		320cm/160 cm
SOLIDEZ A LA LUZ ARTIFICIAL FASTNESS TO ARTIFICIAL LIGHT	UNE-EN ISO 105-B02:2001 Artificial weathering	5-6
PROTECCION ULTRAVIOLETA UV FACTOR PROTECTION	AS/NZS 4399/1996	50
SOLIDEZ DE LAS TINTURAS AL FROTE FASTNESS TO RUBBING	ISO 105-X12:2016	EN SECO/DRY STAINING 5 EN MOJADO/WET STAINING 4-5
RESISTENCIA PILLING RESISTANCE TO PILLING	UNE-EN 14465:2004+A1:2007 UNE-EN ISO 12945-2:2001	4-5
RESISTENCIA ABRASION ABRASION RESISTANCE (MARTINDALE)	UNE-EN 14465:2004+A1:2007 UNE-EN ISO 12947-2:1999/AC:2006	20000
RESISTENCIA AL MOJADO SUPERFICIAL WATER REPELLENCY	UNE-EN ISO 4920:2013	ISO 5 AATCC 100
RESISTENCIA A LA PENETRACION DEL AGUA HYDROSTATIC PRESSURE TEST	UNE-EN 20811:1993	11
REPELENCIA AL ACEITE OIL REPELLENCY-TEFLON	UNE-EN ISO 14419:2010	7
SOLIDEZ DE LAS TINTURAS AL LAVADO FASTNESS TO WASHING	UNE-EN ISO 105-C06:2010	5
RESISTENCIA A LAS COSTURAS SEAM SLIPPAGE RESISTANCE	UNE-EN 14465:2004+A1:2007 UNE-EN ISO 13936-2:2004	URDIMBRE/WARP 3.60mm TRAMA/WEFT 3.40mm
VARIACIONES DIMENSIONALES DIMENSIONAL CHANGE IN WASHING AND DRYING	UNE-EN ISO 5077:2008+ERRATUM:2008	URDIMBRE/WARP 0,0 TRAMA/WEFT -2,5
DETERMINACION DEL POCHAGE DETERMINATION POCHAGE	UNE-EN 14704-2:2007	DEFORMACION MÁXIMA/maximum deformation 8.52mm DEFORMACION NO RECUPERADA/deformation not recovered 3.67



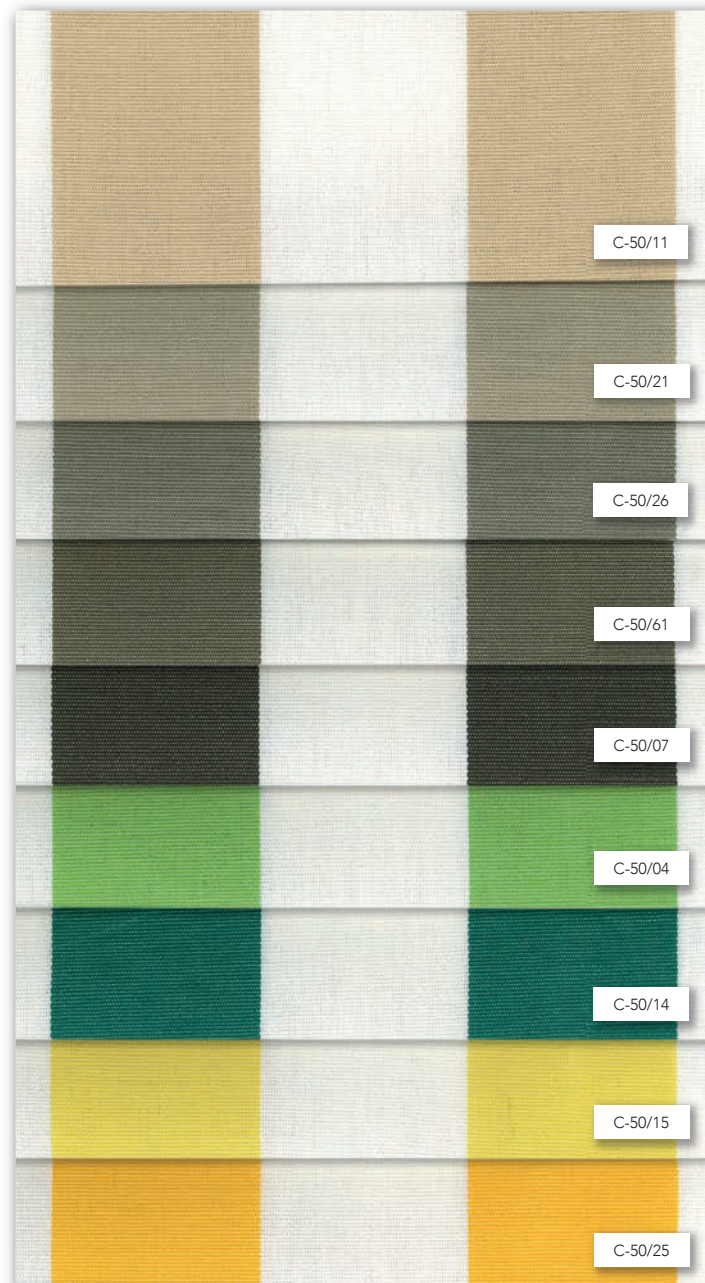
WASHING RECOMMENDATIONS



CERTIFICATES



OUTDOOR FABRICS



LENA RAYAS

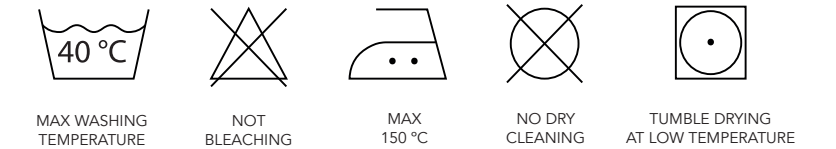


FICHA TECNICA DRALON/TECHNICAL SHEET

ARTICULO/ARTICLE	LENA RAYAS	CALADA/PLAIN
COMPOSICION/COMPOSITION	UNE-EN ISO 1833:2011	100% ACRILICO, DRALON ACRYLIC
PESO gr/m2 / WEIGHT OF FABRIC PER m2		190 gr
ANCHO / WIDTH		320cm/160 cm
SOLIDEZ A LA LUZ ARTIFICIAL FASTNESS TO ARTIFICIAL LIGHT	UNE-EN ISO 105-B02:2001 Ar ficial weathering	5-6
PROTECCION ULTRAVIOLETA UV FACTOR PROTECTION	AS/NZS 4399/1996	50
SOLIDEZ DE LAS TINTURAS AL FROTE FASTNESS TO RUBBING	ISO 105-X12:2016	EN SECO/DRY STAINING 5 EN MOJADO/WET STAINING 4-5
RESISTENCIA PILLING RESISTANCE TO PILLING	UNE-EN 14465:2004+A1:2007 UNE- EN ISO 12945-2:2001	4-5
RESISTENCIA ABRASION ABRASION RESISTANCE (MARTINDALE)	UNE-EN 14465:2004+A1:2007 UNE-EN ISO 12947-2:1999/AC:2006	20000
RESISTENCIA AL MOJADO SUPERFICIAL WATER REPELLENCY	UNE-EN ISO 4920:2013	ISO 5 AATCC 100
RESISTENCIA A LA PENETRACION DEL AGUA HYDROSTATIC PRESSURE TEST	UNE-EN 20811:1993	11
REPELENCIA AL ACEITE OIL REPELLENCY-TEFLON	UNE-EN ISO 14419:2010	7
SOLIDEZ DE LAS TINTURAS AL LAVADO FASTNESS TO WASHING	UNE-EN ISO 105-C06:2010	5
RESISTENCIA A LAS COSTURAS SEAM SLIPPAGE RESISTANCE	UNE-EN 14465:2004+A1:2007 UNE- EN ISO 13936-2:2004	URDIMBRE/WARP 3.60mm TRAMA/WEFT 3.40mm
VARIACIONES DIMENSIONALES DIMENSIONAL CHANGE IN WASHING AND DRYING	UNE-EN ISO 5077:2008+ERRATUM:2008	URDIMBRE/WARP 0,0 TRAMA/WEFT -2,5
DETERMINACION DEL POCHAGE DETERMINATION POCHAGE	UNE-EN 14704-2:2007	DEFORMACION MÁXIMA/maximum deforma on 8.52mm DEFORMACION NO RECUPERADA/deforma on not recovered 3.67



WASHING RECOMMENDATIONS



CERTIFICATES



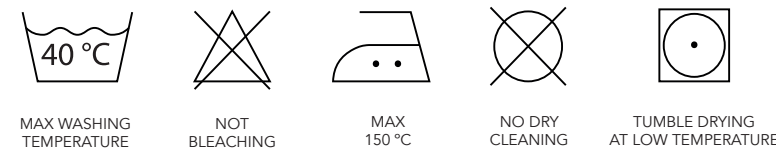


FICHA TECNICA / TECHNICAL SHEET

ARTICULO/ARTICLE	BALI	CALADA/PLAIN
COMPOSICION/COMPOSITION		100% OLEFINA
PESO gr/m2 / WEIGHT OF FABRIC PER m2		200 gr/m2
ANCHO / WIDTH		300 cm/150 cm
SOLIDEZ A LA LUZ ARTIFICIAL FASTNESS TO ARTIFICIAL LIGHT	UNE-EN ISO 105-B04 Método 2. Artificial weathering	7-8
RESISTENCIA PILLING RESISTANCE TO PILLING	UNE-EN ISO 12945-4:2020	5
RESISTENCIA ABRASION ABRASION RESISTANCE (MARTINDALE)	UNE-EN ISO 12947-2:2016	30000
RESISTENCIA A LAS COSTURAS SEAM SLIPPAGE RESISTANCE	UNE-EN ISO 13936-1:2004	6mm

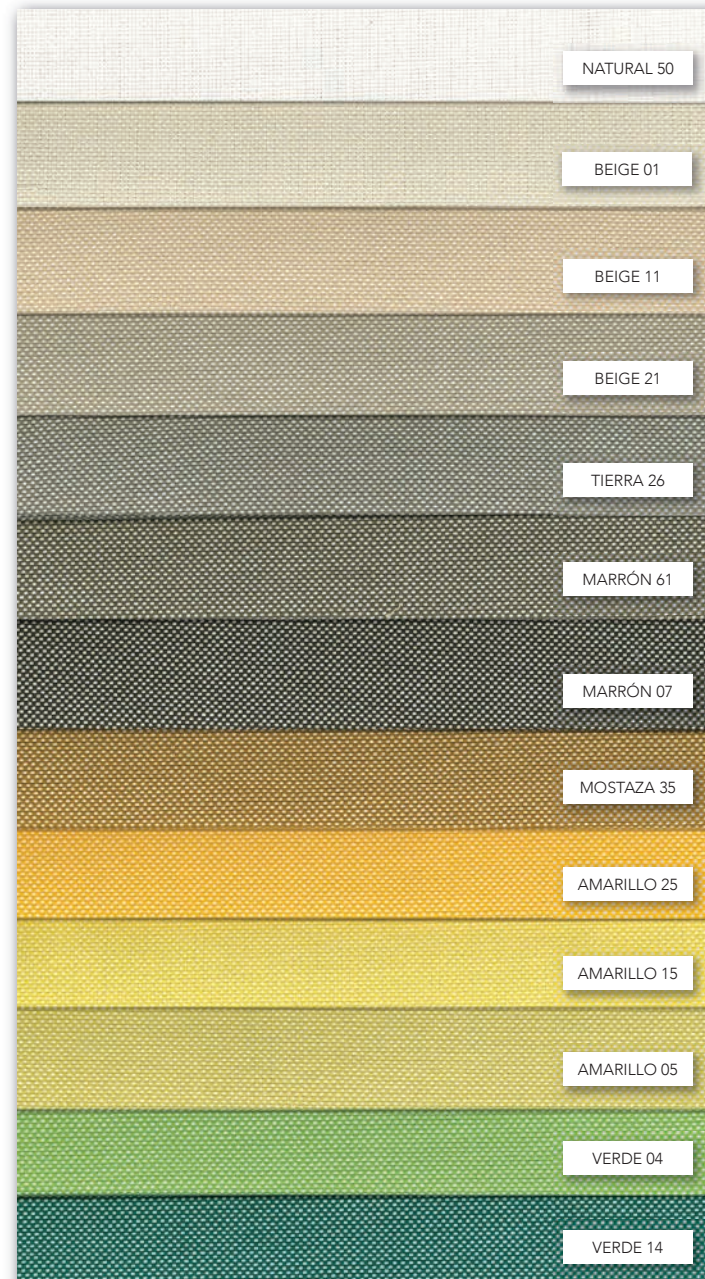


WASHING RECOMMENDATIONS



CERTIFICATES



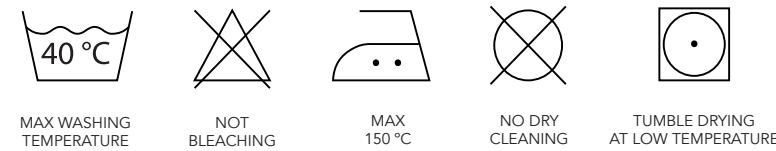


FICHA TECNICA / TECHNICAL SHEET

ARTICULO/ARTICLE	CRETA	PANAMA
COMPOSICION/COMPOSITION	100% ACRILICO	DRALON ACRYLIC
PESO gr/m2 / WEIGHT OF FABRIC PER m2		230 gr/m2
ANCHO / WIDTH		320 cm/160 cm
SOLIDEZ A LA LUZ ARTIFICIAL FASTNESS TO ARTIFICIAL LIGHT	EN ISO 105-B02:2014 Método 2 Artificial weathering	7-8
RESISTENCIA PILLING RESISTANCE TO PILLING	EN ISO 12945-2:2001	4-5
RESISTENCIA ABRASION ABRASION RESISTANCE (MARTINDALE)	EN ISO 12947-2:2016	18000



WASHING RECOMMENDATIONS



CERTIFICATES



OUTDOOR FABRICS

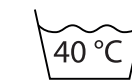
FIDJI



FICHA TECNICA / TECHNICAL SHEET

ARTICULO/ARTICLE	FIDJI	CALADA/PLAIN
COMPOSICION/COMPOSITION		100% OLEFINA
PESO gr/m2 / WEIGHT OF FABRIC PER m2		215 gr/m2
ANCHO / WIDTH		300 cm/150 cm
SOLIDEZ A LA LUZ ARTIFICIAL FASTNESS TO ARTIFICIAL LIGHT	UNE-EN ISO 105-B04 Método 2. Artificial weathering	7-8
RESISTENCIA PILLING RESISTANCE TO PILLING	UNE-EN ISO 12945-4:2000	5
RESISTENCIA ABRASION ABRASION RESISTANCE (MARTINDALE)	UNE-EN ISO 12947-2:2016	20000
RESISTENCIA A LAS COSTURAS SEAM SLIPPAGE RESISTANCE	UNE-EN ISO 13936-1:2004	6mm

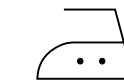
WASHING RECOMMENDATIONS



MAX WASHING TEMPERATURE



NOT BLEACHING



MAX 150 °C



NO DRY CLEANING



TUMBLE DRYING AT LOW TEMPERATURE

CERTIFICATES

